

w e s t e n d



2 9 / 2 3 d o r n o c h t e r r a c e

Views from St Lucia... through the city... to Toowong, this 3 level, 240sqm apartment is one never to be repeated!

Located on the top 2 floors of the northern wing of the building, this apartment has been renovated throughout completely, comprising of new electricals and plumbing... windows and sliding doors to absorb those views... and is one not to be missed!

Featuring 3 bedrooms, 3 bathrooms, stainless steel fixtures and fittings, italian polished vitrified flooring, and an amazing stainless steel water wall feature throughout the 2 levels of living.

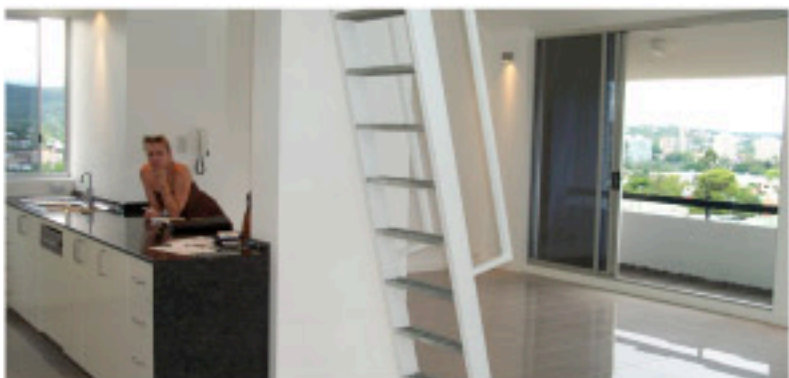
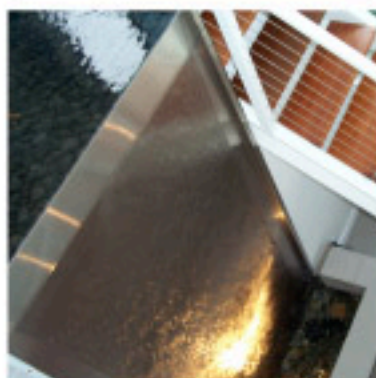
Don't forget the mezzanine study, and your very own private rooftop terrace! Don't miss this rare opportunity.

Rates \$1,800 per annum

Body Corporate \$2,200 per annum

Admin Fund \$440 per quarter

Sinking Fund \$110 per quarter



j p e x c l u s i v e r e a l i t y . c o m

direct - 07 3510 5248

mobile - 0414 396 880

jenniferparker@remax.com.au

4/151 baroona road, paddington q 4064

j e n n y
p a r k e r



jp